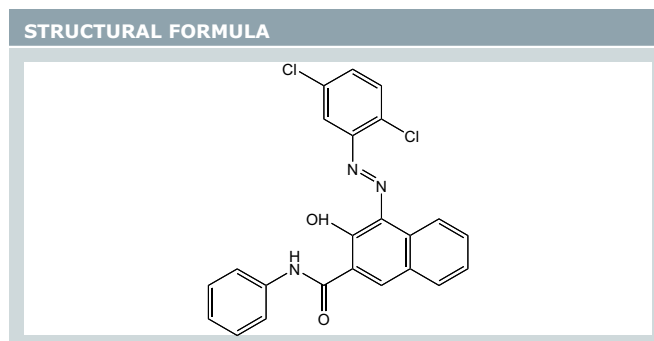


PRODUCT DESCRIPTION		
Color Index		Pigment Red 2
C.I. No.		12310
Chemical Type		Naphthol AS
CAS No.		6041-94-7
Hue Angle [1/3 SD]	18.2	DIN 5033



PHYSICAL DATA		
Appearance	red powder	
Density [g/cm ³]	1.5	DIN EN ISO 787-10
Bulk Volume [l/kg]	3.6	DIN EN ISO 787-11
Specific Surface [m ² /g]	51.4	DIN 66132



FASTNESS PROPERTIES		
Acid	5	DIN EN ISO 20105-A02
Alkali	5	DIN EN ISO 20105-A02
Water	4 - 5	DIN ISO 2836
Ethanol	3	DIN ISO 2836
Ethylacetate	2 - 3	DIN ISO 2836
MEK	1 - 2	DIN ISO 2836
Toluene	1 - 2	DIN ISO 2836
DOP	2	DIN ISO 2836
Light Fastness 1/3 SD (print)	8	DIN EN ISO 105-B01
Light Fastness 1/25 SD (print)	4	DIN EN ISO 105-B01

APPLICATION PROFILE	
Offset	recommended
Publication Gravure	-
Packaging Inks [solvent-borne]	potential use
Packaging Inks [water-borne]	recommended
Laminated Inks	-

STANDARD PACKAGING
20kg Paper Bags
Different types of packaging are available on request

For regulatory information we refer to our Regulatory Affairs Sheet

® = Registered trademark of Heubach GmbH. Our product specifications, application information and any other information in this document is based on our current state of knowledge at the Revision Date mentioned above. They are non-binding and cannot be taken as a guarantee. The processing company must establish the suitability of individual products itself. As their use lies beyond our knowledge and control, we cannot accept any liability relating to the use of our products in particular applications. In addition to that, the legal rights of third parties must always be considered. The specification agreed between the customer and ourselves is the basis upon which our general sales and delivery conditions are set and is the deciding factor concerning any liabilities. Our standard specification is then valid if no specification has been agreed upon between the customer and ourselves.